

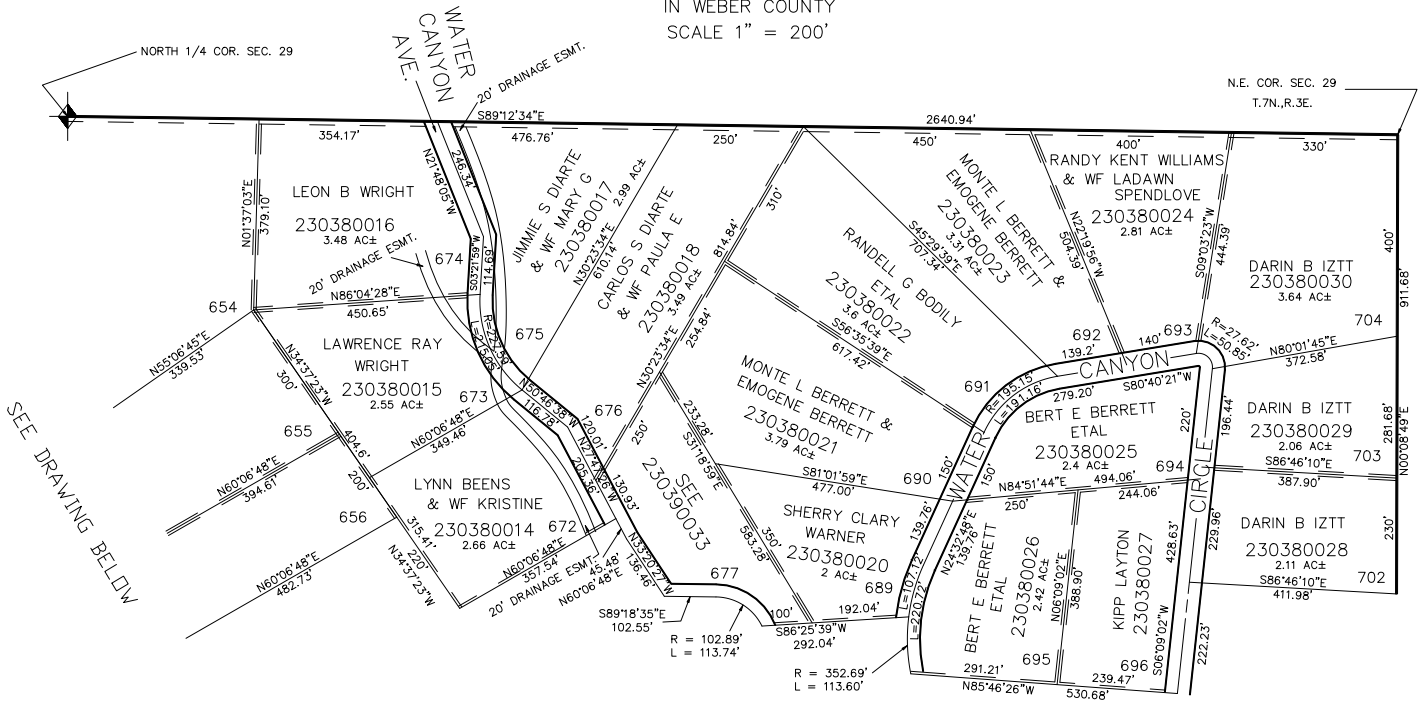
PART OF SEC. 29, T.7N., R.3E., S.L.B. & M.

EVERGREEN PARK SUBDIVISION NO. 1

LOTS 551-552, 599-602, 650-656, 672-677, 689-696, 702-704

IN WEBER COUNTY
SCALE 1" = 200'

TAXING UNIT: 58

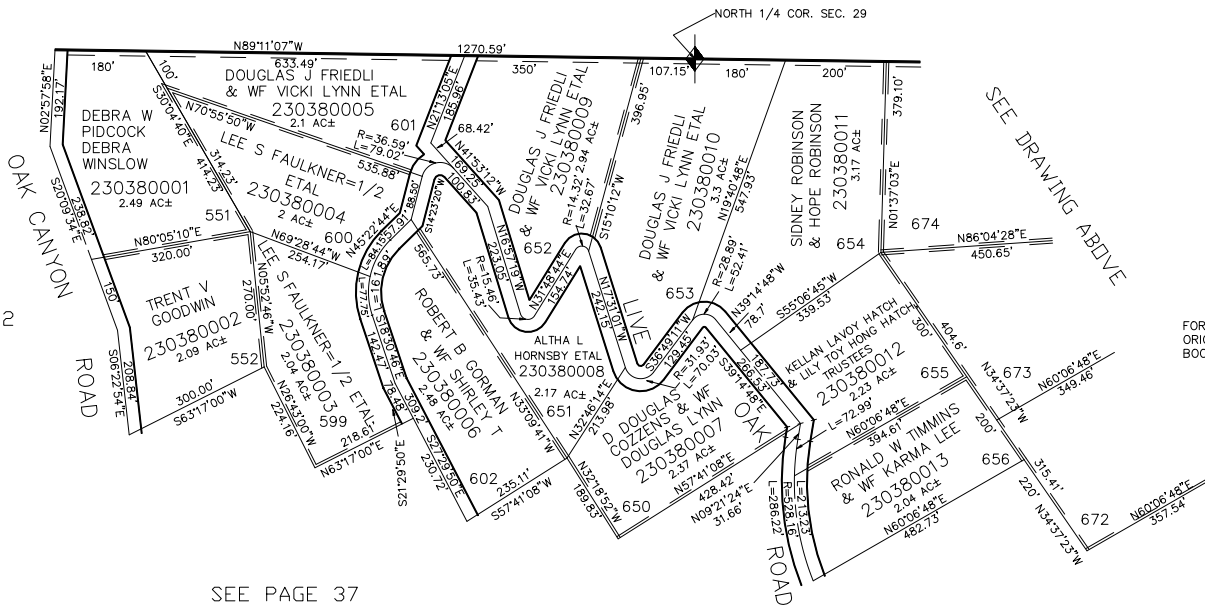


SEE PAGE 39

ALL DASHED LINES SHOWN
ON LOT LINES ARE 10' UTILITY
EASMENTS UNLESS OTHERWISE NOTED.

ALL ROADS ARE
PRIVATE R.O.W.'S

SEE PAGE 32



SEE PAGE 37

FOR COMPLETE ENG DATA SEE
ORIGINAL DEDICATION PLAT IN
BOOK 13, PAGE 56 OF RECORDS.